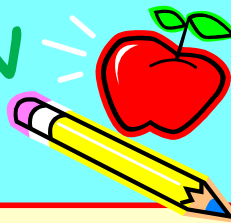


MARTINSON MESSENGER



**Weekly
Update**
September 17 –
September 23,
2017

PRINCIPAL'S NEWS

Our Time Capsule is ready to be buried in the new playground. Everyone sent wonderful messages to the future MES students.

Back to School Curriculum Night is this Tuesday from 6:00-8:00pm. We hope you can join us to learn about what your child will be learning this year.

The new outdoor classroom is almost complete, thanks to Andrew Pozerski and his Eagle Scout Project. He is holding a final fundraiser, a Car Wash, on Saturday 9/30 from 10-2 at FBMS. Please support this amazing project.

Have a terrific week!

This Week's

Important Events at Martinson

MONDAY: Band Lessons-Gr. 4 & 5 Before School

TUESDAY: Back to School Curriculum Night, 6-8P

WEDNESDAY: Strings Lessons Gr. 3 Starts/Before School Orch. /Gr. 4 & 5

THURSDAY:

FRIDAY:

[Healthy Celebrations](#)

[Healthy Students, Healthy Schools](#)

Follow me on Twitter at Dr. Leslie Scollins @MESPPAL .

For more information click the links below:

[MES Website](#)

The [Recreation Department](#) will offer a variety of programs

Details on the above programs are listed in the Winter Community Brochure.

[Marshfield Food Pantry](#)

[Sowing Seeds](#)

From The Library

Welcome back! Would you like to help in the library this year? Tasks could include scanning books at the circulation desk, shelving books, reading or helping students find books. Sign up forms will be available at our Open House but feel free to send me a message at kjelstrom-hamill@mpsd.org as well. Thank You and Happy Reading!

Kristine Jelstrom-Hamill - MES Librarian

Nurses Corner

Please keep your child's health record up to date and forward annual physical exams and immunization status reports to the Nurse's Office. Any medication that is to be given or stored at school must have a written Dr.'s order. Please do not send medication to school with students, it needs to be handed directly from the parent/guardian to the nurse.

Vision and Hearing screenings will begin soon on all students, if there are any concerns or questions about the process, please call and speak directly to Nurse Mudge 781-319-3985



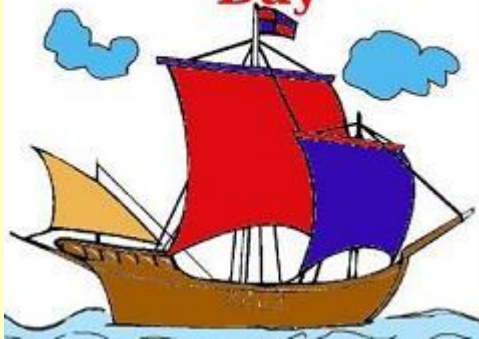
Martinson Messenger Page 2

From the School Nutrition Dept.

School Nutrition Department has a NEW Electronic Free and Reduced applications please click on the link below to apply for Free and Reduced.

<http://nlappscloud.com/District.aspx?sdid=40&op=30dcb3efe164777986725f978cd9b4ba>

Happy Columbus Day



Looking Ahead Mark Your Calendars

9/26: **Kid's Fit Starts, School Committee Mtg.-SV Bldg., 7P**

10/5: **OPEN HOUSE, 6-8P**

10/9: **NO SCHOOL-COLUMBUS DAY**

10/10: **PG Visits**

10/16: **TOWN MEETING-7P, MHS**

10/17: **Celtics Spirit Day, Enrichment-Wingmasters, Gr. K, PG Visits, School Com. Mtg., SV Bldg.-7P**

10/27: **SEPAC Meeting-7-9P, MES Auditorium**

10/29: **Trunk or Treat-TBA**

11/3: **Picture Makeup Day**

11/10: **NO SCHOOL-VETERAN'S DAY**

11/14: **PG Visits, School Com. Mtg.-FBMS, 7P**

PTO NEWS

Thank you again to all who volunteered to help on picture day; having volunteers there makes the day move much quicker and smoother for teachers and children so your help is greatly appreciated!

Thank you to those who are able to make our first PTO meeting. We know not everybody was able to make it, September is a real time crunch, however if you have any questions regarding what was discussed at the meeting please feel free to reach out to any PTO board member!

SAVE THE DATE!!! Trunk or treat is happening! Mark your calendars for a fun filled day on Sunday, October 29th. More info and details to follow in the weeks to come. Once again, Sarah Beck has agreed to take charge, however it takes a village! If you are interested in volunteering in any capacity, please contact Sarah at sbbeck@hotmail.com. A first meeting of volunteers is tentatively scheduled for Monday, September 18th. Please reach out to Sarah if you would like to attend.

Capital campaign and Directory Spot forms have gone home; please take a few minutes to review and return the forms to school at your earliest convenience. We are in the process of updating Directory Spot as the forms come in so appreciate your patience with this process.

We have some fun passive fundraisers planned in the coming months, be on the lookout for more information!

Marshfield School Nutrition

IMPORTANT: SETTING UP YOUR ACCOUNT

To set up your myschoolbucks.com account you will need to put in your Child's BIRTH DATE to set them up (you do not need your child's ID number for this).

Payment Options: You do not have to use the electronic payment system to pay in advance for your child's lunch. There are 3 ways to pay ahead and keep your account in the positive!

Pay by Check Check made payable to: Town of Marshfield	Electronic Payment Myschoolbucks.com	Cash
Send a check into school with your child made out to the Town of Marshfield. It will be sent to the School Nutrition staff and entered into the POS system. Please put your child's FULL NAME IN THE MEMO area.	Note: You must REGISTER before you can pay online. www.myschoolbucks.com *note: \$1.95 convenience fee to pay online. If you deposit into all of your child's accounts at the same time (one transaction) it will only cost \$1.95 for the entire transaction. Not \$1.95 per child.	Your child can still pay with cash. The line just moves slower than having money on their account. Please if you send in a plastic bag, put the child's name on the bag and make sure it's tightly closed.

PLEASE ALLOW 24-48 HOURS FOR PAYMENTS TO BE PROCESS

ALL TRANSACTIONS REQUIRE A STUDENT ID CARD (this is not a lunch card). ALL CHILDREN ARE GIVEN A STUDENT ID CARD THE 1st DAY OF SCHOOL.

ELEMENTARY CARDS STAY AT THE SCHOOL.

With this system you can make payments, check the balance, and view a history of what your child is eating for the past 30 days. You can also set up a "Low balance alert".

It is extremely important that you keep a balance in your child's account to avoid an interruption in service.

SET UP A LOW BALANCE NOTIFICATIONS: You can go into myschoolbucks.com and set this up. You will receive a low balance notification. This comes from myschoolbucks.com not the School Nutrition Department. So if you wish not to receive it you need to shut it off on myschoolbucks.com

You can email ntellier@mpd.org if you have any questions.

Thank you for your cooperation!